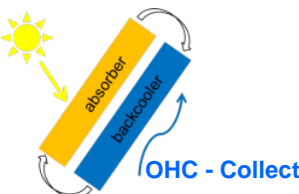


## KUNSTSTOFFKOLLEKTOR MIT EIGENSICHERER TEMPERATURBEGRENZUNG – POTENTIALE FÜR SYSTEMTECHNISCHE INTEGRATIONSMÖGLICHKEITEN

**Alexander Thür**, Katarina Maslikova  
 Universität Innsbruck, Arbeitsbereich Energieeffizientes Bauen

Collector type	$\eta_0$ [-]	$a_1$ [W/m <sup>2</sup> K]	$a_2$ [W/m <sup>2</sup> K <sup>2</sup> ]
FK	0,8	3,0	0,010
TLC	0,7	7,9	0,034
FK-OHC	0,8	3,0	0,010



1 to 10 m<sup>2</sup>

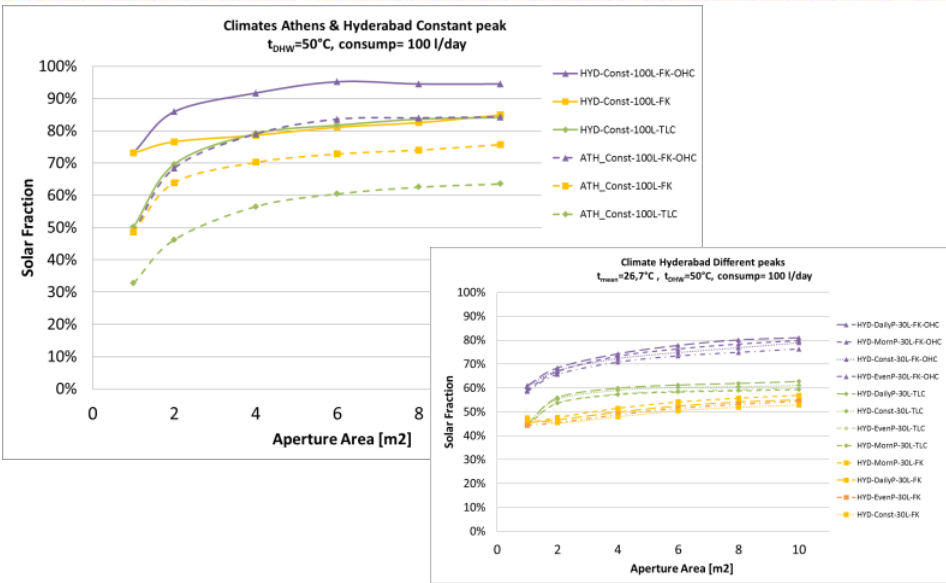
	[°]	Athens	Hyderabad
Latitude		38 N	18 N
Cold water temperature	[°C]	18	26,7
Annual global solar irradiation	[kWh/m <sup>2</sup> ]	1655	2011
100L/ day at 50°C	[kWh/year]	1355	859
200L/ day at 40°C	[kWh/year]	-	872

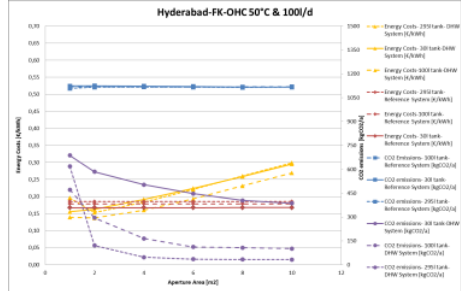
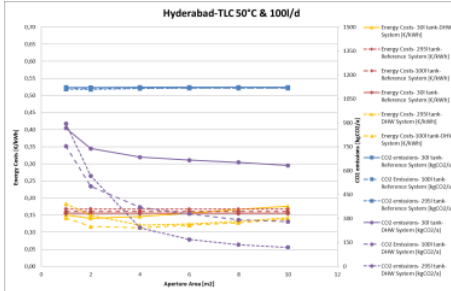
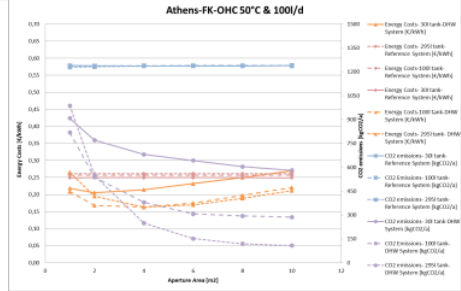
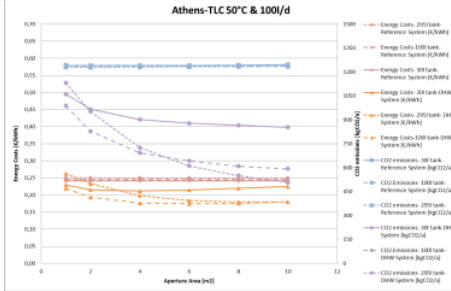
**Three hot water tanks**

- 295 L
- 100 L
- 30 L

Morning peaks  
Evening peaks  
Daily peaks  
Constant

powered by **solpol**





Alexander Thür

Gleisdorf Solar, 8.-10.6.2016

Folie: 3